

modus.

modus ~ “way in which anything is done,” 1648, from L., lit.
“a measure, standard of measure-ment, manner”. Esp. in
modus operandi (1654) “way of doing or accomplishing”
and *modus vivendi* (1879) “way of living or getting along.”

modus.

THE TEAM

JOHN RATTRAY

JAKE DUNCOMBE

COLIN KENNEDY

CALE NUSKE

LEWIS MARNELL

CHIMA FERGUSON

ANDREW BROPHY

MORGAN CAMPBELL

BRETT MARGARITIS

DENNIS DURRANT

ANDREW CURRIE

BRETT MARGARITIS

FRONTSIDE HURRICANE

ALBANY, AUSTRALIA.

PHOTO: STEVE GOURLAY



modus.

JAKE DUNCOMBE

KICKFLIP

CANBERRA, AUSTRALIA.
PHOTO: ANDREW PETERS



modus.



abec 3

MODUS ABEC 3

THIS BEARING IS ALREADY A CUT ABOVE THE COMPETITION BEFORE YOU GET IT OUT OF THE BOX. IT'S ABILITY TO WITHSTAND RELATIVELY HIGH TEMPERATURES AND LOADS, GIVES YOU THE BENEFITS OF KEEPING YOUR SPEED IN THE MOST CRITICAL OF SITUATIONS. THE HIGH LEVEL OF RACE SURFACE FINISH WILL KEEP IT'S SPEED LONGER. THIS IS AN ADVANTAGE YOU CANNOT AFFORD TO BE WITHOUT. SO WHEN YOU'RE LOOKING AT STEPPING UP A LEVEL, YOU'RE ALREADY THERE.

modus.



abec 5

MODUS ABEC 5

THIS IS THE BEARING FOR ANY SESSION. REDUCED TOLERANCES AND DEVIATION IN THE BEARINGS BUILD-UP MEANS THAT THERE IS LESS DISTORTION UNDER LOAD GIVING YOU EVEN GREATER SPEED AND DURATION THAN THE MODUS ABEC 3. IF YOU'RE SERIOUS ABOUT YOUR EQUIPMENT AND WANT VALUE THEN THIS IS YOUR BEARING.

modus.



abec 7

MODUS ABEC 7

THIS IS WHERE YOU SEE THE VALUE IN THE MONEY YOU SPEND. THE MODUS 7 IS A GENUINE ABEC 7 BEARING WITH EXCEPTIONALLY FINE TOLERANCES IN ITS BUILD UP. THIS EQUATES TO A BEARING THAT ROLLS FOR LONGER AND FURTHER, PUTTING TRUTH INTO THE WORDS "YOU GET WHAT YOU PAY FOR".

modus.



CHIMA FERGUSON

SYDNEY, AUSTRALIA.
PHOTO: ANDREW PETERS

modus.



LEWIS MARNELL
KICKFLIP FRONTSIDE TAILSLIDE BIGSPIN
SYDNEY, AUSTRALIA.
PHOTO: ANDREW PETERS

modus.

ANDREW BROPHY

MELBOURNE, AUSTRALIA.
PHOTO: STEVE GOURLAY



modus.



titanium

MODUS TITANIUM

DON'T BE TRYING THESE BEARINGS IF YOU'RE A TYRE KICKER. TITANIUM GIVES THIS BEARING EXCEPTIONALLY HARD ROLLING SURFACES AND CONSEQUENTLY LESS FRICTION. LESS FRICTION MEANS MORE SPEED AND THIS SPEED LASTS FOR LONGER. ADD ALL THE TECHNOLOGIES FROM OUR ABEC SERIES BEARINGS AND YOU HAVE AEROSPACE QUALITY THAT KEEPS GOING. THIS IS THE GEAR TO GET YOU GOING AND KEEP YOU THERE.

modus.



Ceramic

MODUS CERAMIC

IF YOU WANT TO BE AT THE TOP, THEN THESE ARE THE BEARINGS YOU NEED TO BE RUNNING. CERAMIC MATERIAL HAS ONE OF THE HARDEST SURFACES AROUND. BEARINGS MADE WITH THIS MATERIAL PRODUCE LESS HEAT, REQUIRE LESS LUBRICATION, CAN RUN AT HIGHER TEMPERATURES AND HAVE A LONGER LIFE. THIS IS THE PREMIERE BEARING NO MATTER HOW YOU LOOK AT THE EQUATION.

modus.



CHIMA FERGUSON
SWITCH FRONTSIDE FLIP
SYDNEY, AUSTRALIA.
PHOTO: MIKE O'MEALLY

modus.

COLIN KENNEDY

KICKFLIP

MELBOURNE, AUSTRALIA.

PHOTO: LEO SHARP



modus.



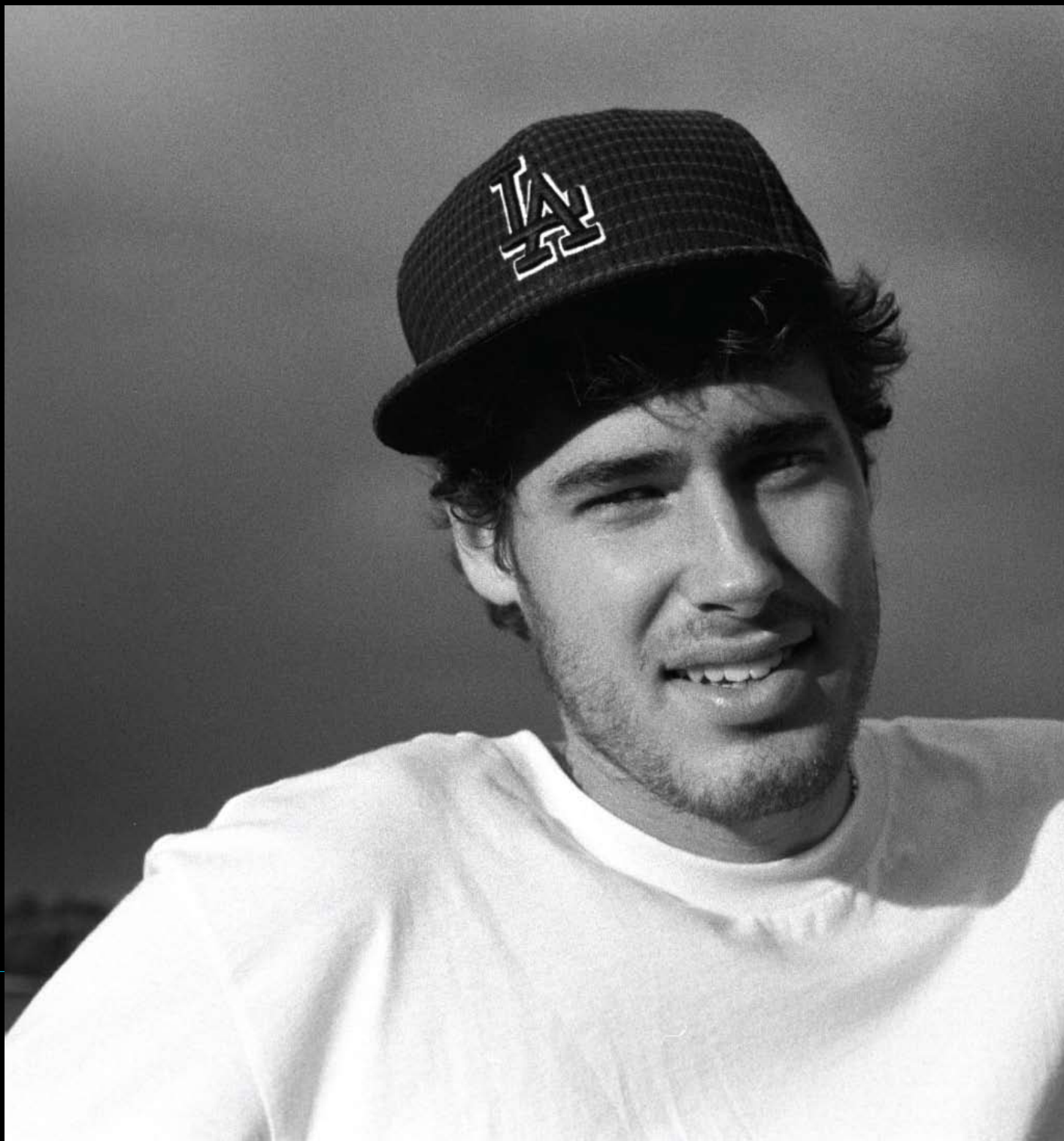
JOHN RATTRAY

OLLIE
SAN DIEGO, USA
PHOTO: JOEY SHIGEO

modus.

CALE NUSKE

MELBOURNE, AUSTRALIA
PHOTO: STEVE GOURLAY



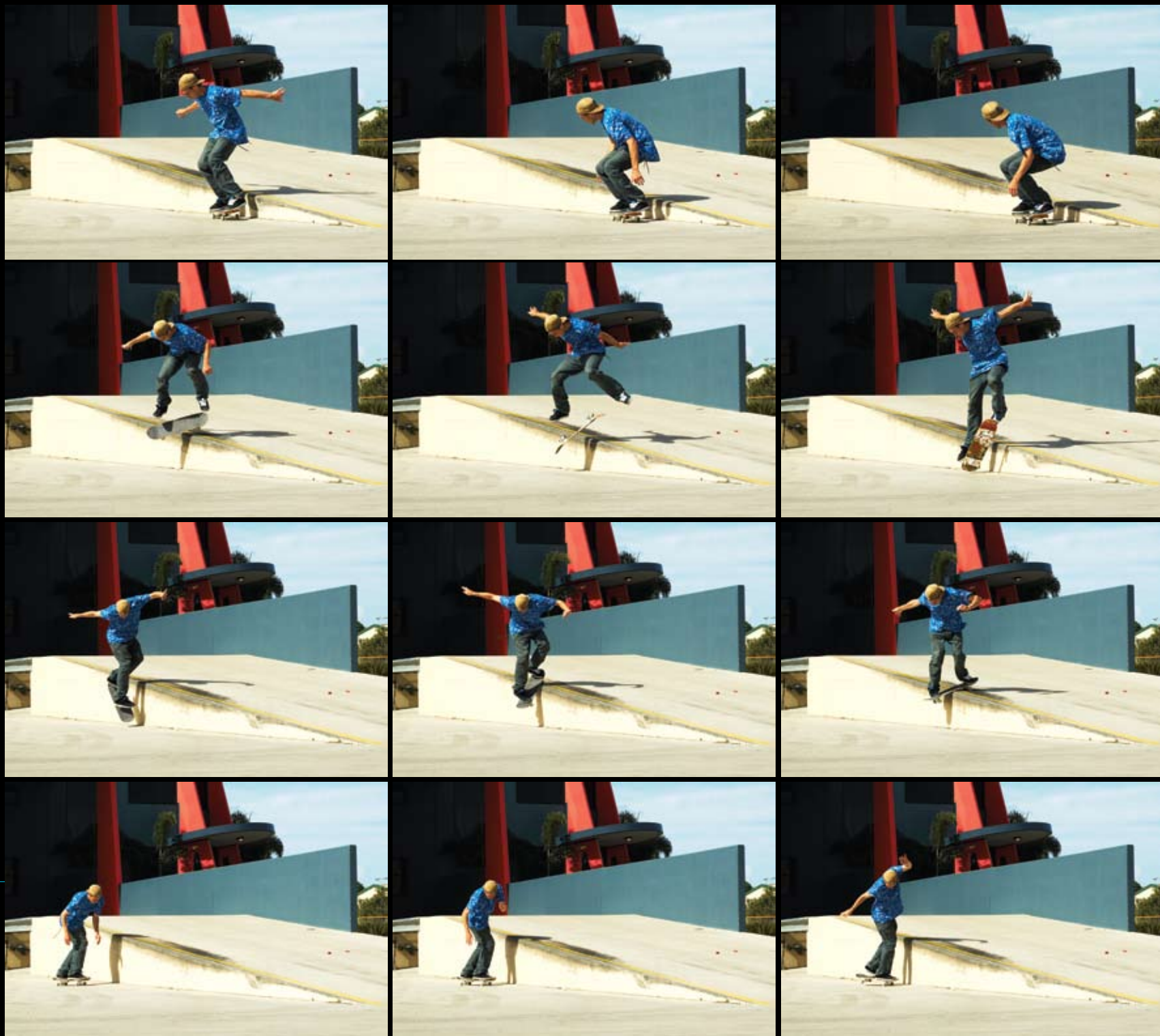
modus.



ANDREW CURRIE

BACKSIDE OLLIE
PORTLAND, USA
PHOTO: MIKE O'MEALLY

modus.



CALE NUSKE

NOLLIE FLIP BACKSIDE LIPSLIDE TO FAKIE
GOLD COAST, AUSTRALIA
PHOTO: ANDREW PETERS

modus.



bolts

MODUS MOUNTING HARDWARE

EACH PACKET CONTAINS EIGHT BLACK BOLTS AND TWO ADDITIONAL POWDER COATED BLUE SPARES FOR CUSTOMISING YOUR SET UP.

AVAILABLE SIZES : 7/8", 1", 1 1/4" ALLEN AND PHILLIPS HEAD

modus.



black

MODUS BLACK

OUR NO NONSENSE BEARING THAT KEEPS YOU ROLLING. WE ACHIEVE THIS WITH OUR BASE TECHNOLOGIES OF DEEP BEARING GROOVES, HIGH LEVEL LUBRICATION & QUALITY OF CONSTRUCTION MATERIALS. IF YOUR LOOKING FOR VALUE, THIS IS YOUR BEARING.



MODUS GRIPTAPE

9" BY 33" SHEETS.
20 PCS PER BOX.
AVAILABLE IN REGULAR AND PERFORATED SHEETS.

modus.



MODUS RISER PADS

1/4 INCH THICK.
TWO PER PACK.
AVAILABLE IN WHITE, BLACK AND BLUE.



MODUS TRUCK CUSHIONS

MEDIUM AND HARD CUSHIONS.
ONE TOP AND BOTTOM CUSHION PER PACK.
AVAILABLE IN BLACK AND WHITE.

modus.



ANDREW CURRIE

MELBOURNE, AUSTRALIA
PHOTO: STEVE GOURLAY

modus.



MORGAN CAMPBELL

SMITH GRIND TO SWITCH CROOKS
PERTH, AUSTRALIA.
PHOTO: LEO SHARP

modus.

DENNIS DURRANT

SWITCH CROOKS
BRISBANE, AUSTRALIA.
PHOTO: YOUNG VO



modus.



ANDREW BROPHY

SWITCH 360 FLIP
MELBOURNE, AUSTRALIA
PHOTO: STEVE GOURLAY

modus.



JAKE DUNCOMBE
MELBOURNE, AUSTRALIA
PHOTO: STEVE GOURLAY

modus.



MODUS BLACK
HIGH CARBON CHROMIUM STEEL
DEEP GROOVE RACES
ANTICORIT OHK 230 GREASE
SINGLE REMOVABLE NEOPRENE SEAL



MODUS ABEC 3
HIGH CARBON CHROMIUM STEEL
WITHSTANDS UP TO 350 DEGREES C
HIGH LEVEL SURFACE FINISH
DEEP GROOVE RACES
ANTICORIT OHK 230 GREASE
SINGLE REMOVABLE NEOPRENE SEAL
BEARINGS SPACERS INCLUDED



MODUS ABEC 5
HIGH CARBON CHROMIUM STEEL
WITHSTANDS UP TO 350 DEGREES C
HIGH LEVEL SURFACE FINISHES
DEEP GROOVE RACES
REDUCED DEVIATION AND TOLERANCE
ANTICORIT OHK 230 GREASE
SINGLE REMOVABLE NEOPRENE SEAL
BEARINGS SPACERS INCLUDED



MODUS ABEC 7
HIGH CARBON CHROMIUM STEEL
WITHSTANDS UP TO 350 DEGREES C
HIGH LEVEL SURFACE FINISHES
DEEP GROOVE RACES
REDUCED DEVIATION AND TOLERANCE
REDUCED INTERNAL VIBRATION
ANTICORIT OHK 230 GREASE
SINGLE REMOVABLE NEOPRENE SEAL
BEARINGS SPACERS INCLUDED



MODUS TITANIUM
TITANIUM ALLOY BALLS AND RINGS
HIGH END MATCHING TOLERANCES & REDUCED RADIAL RUNOUT
HIGH LEVEL SURFACE FINISHES
DEEP GROOVE RACES
REDUCED DEVIATION AND TOLERANCE
REDUCED INTERNAL VIBRATION
ANTICORIT OHK 230 GREASE
SINGLE REMOVABLE NEOPRENE SEAL
BEARINGS SPACERS INCLUDED



MODUS CERAMIC
CERAMIC BALLS
HIGH END MATCHING TOLERANCES & REDUCED RADIAL RUNOUT
HIGH LEVEL SURFACE FINISHES
DEEP GROOVE RACES
REDUCED DEVIATION AND TOLERANCE
REDUCED INTERNAL VIBRATION
ANTICORIT OHK 230 GREASE
SINGLE REMOVABLE NEOPRENE SEAL
BEARINGS SPACERS INCLUDED

MODUS BEARING SPECIFICATIONS

FIVEFOOT4 DISTRIBUTION

P.O. BOX 1965
SUBIACO W.A. 6904
AUSTRALIA

TEL: +61 (0)8 9225 7180 FAX: +61 (0)8 9225 7181

EMAIL: info@fivefoot4.com

www.modusfamily.com

